

Unit 7 Sight Singing Assignment

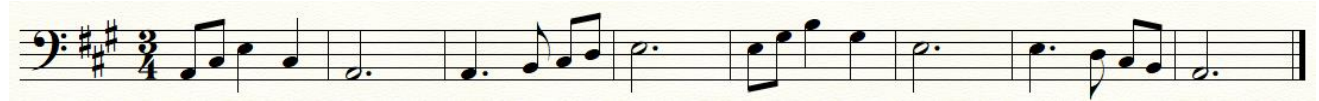
Melodies with Tones from the Tonic and Dominant Triads; Major and Minor Keys; Simple and Compound Time

Conduct yourself in 2, 3, or 4 as indicated by the time signature. Sing using solfege.

Examples starting on *do*:



“Paw Paw Patch” (American folk song)



“Here We Go ‘Round the Mulberry Bush” (English folk song)



“On the Bridge of Avignon” (French folk song)



Examples starting on *sol*:





“La Cucaracha” (Mexican folk song)



Wolfgang Amadeus Mozart, String Quartet K. 421, IV.



Duets

Practice with a partner, preparing both parts so that you can perform either with your instructor. Conduct and sing using solfege.

Psalm 23 (*Scottish Psalter*, 1650)



Wolfgang Amadeus Mozart, Piano Concerto K. 503, I.



Johann Sebastian Bach, “Brandenburg” Concerto No. 5, I.



Wolfgang Amadeus Mozart, Violin Concerto No. 5 K. 219, I.



C. Hubert Parry, *Laudate Dominum*



Rounds

Practice with one or more partners, conducting and using solfege. Sing through each round several times so that you can hear how the harmonies work.

“Ego Sum Pauper” (Latin round)



Joseph E. S. Owen, “Mourn for the Thousands Slain”

