

Unit 4 Sight Singing Assignment

Intervals Warm-Up: Intervals in Context

Every interval has a logical context in diatonic music. Intervals are not random, and not every interval should automatically be related to *do*. This warm-up presents all the simple intervals in common major-key contexts. Conduct yourself and sing using the printed text.

do ti ti do mi-nor se-cond do re re do ma-jor se-cond mi sol sol mi mi-nor thi-rd mi do do mi

8
ma-jor thi-rd do sol sol do per-fect fou-rth ti fa fa ti tri-tone mi do. do sol sol do per-fect fi-fth

15
mi do do mi mi-nor si-xth sol mi mi sol ma-jor si-xth sol fa fa sol mi-nor se-venth sol la ti

22
do. do ti ti do mi-nor se-cond do ti ti do ma-jor se-venth do do do do per-fect oc-tave.

Dotted Rhythms

Conduct yourself confidently as indicated by the numerator in the time signature. Chant using the syllable “Tah” while always subdividing in your head. Check with a subdivided metronome that you’re performing the dotted rhythms perfectly.

4/4

2/4

3/4

3/2

Well-Known Melodies With Dotted Rhythms

Alouette, gentille alouette (Canadian folk song)



Isaac Watts, "Joy to the World" (1719)



"Why Shouldn't My Goose?" (English round song)



Whyshoul-dn't mygoose lay as well as thygoose, when I paid for mygoose twice as much as thou?

Melodies from Diatonic Repertoire: Tonic Triad Skips, Dotted Rhythms

Wolfgang Amadeus Mozart, Concerto for Flute and Harp K. 299, I.



Wolfgang Amadeus Mozart, Clarinet Concerto K. 622, II.



George Frideric Handel, *Water Music* HWV 348, V. "Air"



Franz Schubert, *Die Forelle* ("The Trout") D. 550



Louise Farrenc, Sonata for Piano and Cello Op. 46, I.



More Rhythms: Compound Time

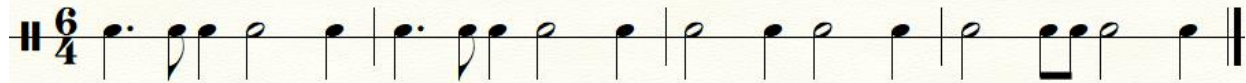
The following rhythm is notated in three different time signatures. Memorize how these common patterns appear in 6/16 and 6/4 as well as the more familiar 6/8. Conduct yourself in two and chant using “Tah.”



Carefully ascertain the number of beats, the beat note, and divisions of the beat before you start. Conduct in the appropriate beat pattern and chant using “Tah.” Confused? Write in some conductor’s beats to guide you, and use your metronome to divide the beat during practice.



Wolfgang Amadeus Mozart, Piano Sonata K. 331, I.



“Oliver Cromwell,” 12/8 version



Compound Time Round:

Practice with a partner, conducting in three and singing with solfege.

“London’s Burning” (English folk song)

1. Lon-don's bur-ning, 2. Lon-don's bur-ning, fetch the en-gines, fetch the en-gines, fire

3. fire, fire fire, 4. pour on wa-ter, pour on wa-ter!