



## The “Find Do” Game

1. The instructor will play a pitch on the piano. This pitch is *do*. The instructor will ask you to sing *ti*, *re*, *mi*, or *sol* in that key. Tip: use an intermediary step to produce your final answer. For example:

Instructor: "This pitch is *do*. Where is *sol*?"      Student: "Do-re-mi-fa-sol..." (intermediary step)      Student: "Do, sol." (final answer)

2. The instructor will play a pitch on the piano. This pitch may be *ti*, *re*, *mi*, or *sol*. Using the given pitch as your starting point, find *do*. Find an intermediary method that works successfully every time, and in any possible key. For example:

Instructor: "This pitch is *mi*. Where is *do*?"      Student: "Hot cross buns... mi-re-do..." (intermediary step)      Student: "Mi, do." (final answer)

## Melodic Solos

Sing the melodies using movable-*do* solfege, conducting yourself in two, three, or four as appropriate.

Step 1: look at the clef, key signature, and time signature. Play the tonic triad on the piano. Sing through the scale and arpeggio of that key as shown.

Step 2: notice the note values and pitches and the overall shape of the melody.

Step 3: practice once with conducting and rhythm only, next time add pitches.

**Moderato** (M.M. ♩ = 100)

do re mi fa sol la ti do to la sol fa mi re do do mi sol do sol mi do

A scale in context: the opening of Beethoven’s Piano Trio Op. 97 (“Archduke”), movement 2

A scale using smaller and smaller note values

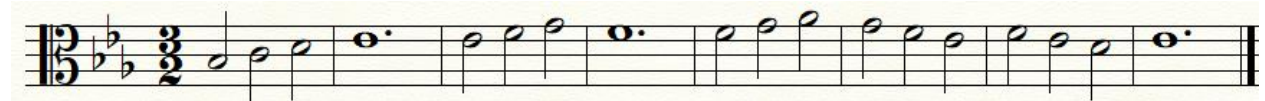
A familiar stepwise melody: *Hot Cross Buns*



Stepwise melodic solos in a variety of clefs and time signatures



Not all songs start on *do*!



### Melodic Duets

Sing the starred part while playing the other part on the piano. Try to stick to your own notes without getting distracted by the other part.



