



Jean-Baptiste Lully, *Armide* HWV 71, *Ouverture*



Rhythm and Melody: More Difficult Subdivisions, More Difficult Diatonic Leaps

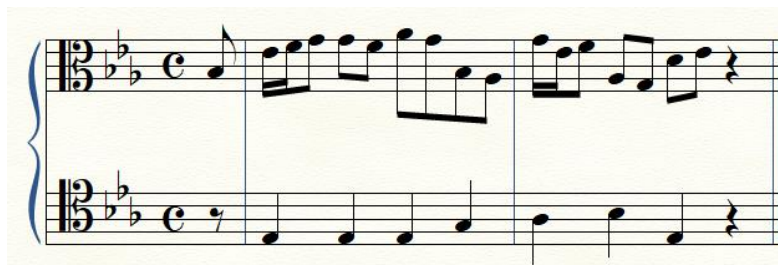
Felix Mendelssohn-Bartholdy, *Lieder ohne Worte* Op. 53 No. 19



Johann Sebastian Bach, *Brandenburg Concerto* No. 5, II.



Johann Sebastian Bach, *Wachet auf, ruft uns die Stimme* BWV 140, II.



**Catch: Henry Harington (1727-1816), "O, That I Had Wings Like a Dove!"**

Instructions: three singers (or groups of singers) with different starting points. Group 1: start at measure 1, sing straight through. Group 2: start at measure 11, sing to the end, go without a break to measure 1 and sing through measure 10. Group 3: start at measure 21, sing to the end, go without a break to measure 1 and sing through measure 20.

The image displays a musical score for a three-part setting of the hymn "O, That I Had Wings Like a Dove!". The score is written in treble clef with a key signature of two flats (B-flat and E-flat) and a 3/2 time signature. It consists of six staves of music, each representing a different starting point for a singer or group of singers. The first staff begins at measure 1 and is marked with a "1.". The second staff begins at measure 6 and is marked with a "6". The third staff begins at measure 11 and is marked with a "11" and a "2.". The fourth staff begins at measure 16 and is marked with a "16". The fifth staff begins at measure 21 and is marked with a "21" and a "3.". The sixth staff begins at measure 26 and is marked with a "26". The music features a variety of note values, including quarter, eighth, and sixteenth notes, as well as rests and a fermata. The score concludes with a double bar line at the end of the sixth staff.